



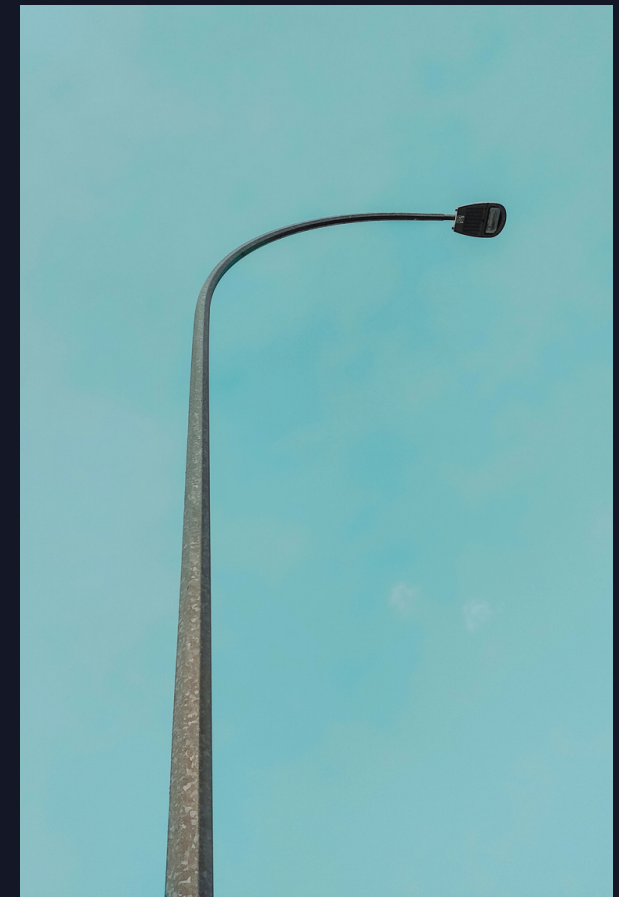
CONICAL STREET LIGHTING POLE

Conical street lighting poles are popular for outdoor installations due to their sleek design and effective light distribution. Their tapered shape focuses light downward, reducing light pollution and enhancing illumination. Futao Metal uses high quality materials to ensure the best street lighting poles possible.



STREET LIGHTING PRODUCT CATALOGUE

 **FUTAO METAL**



OCTAGONAL STREET LIGHTING POLE

The unique shape of octagonal lighting poles provides a sleek and modern look that can enhance the overall design of a street or sidewalk. Additionally, octagonal poles offer ample strength and durability to support heavy lighting fixtures, ensuring the safety and functionality of the lighting system.

GENERAL SPECIFICATIONS

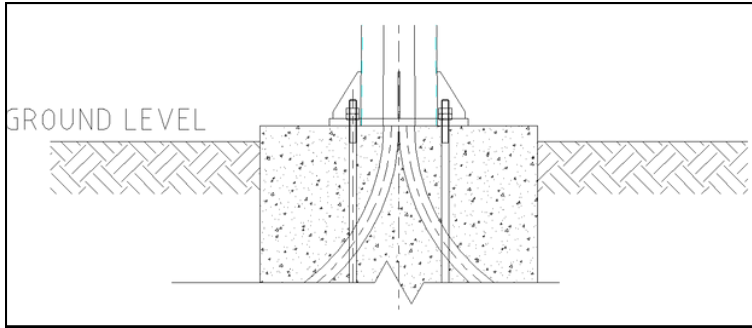
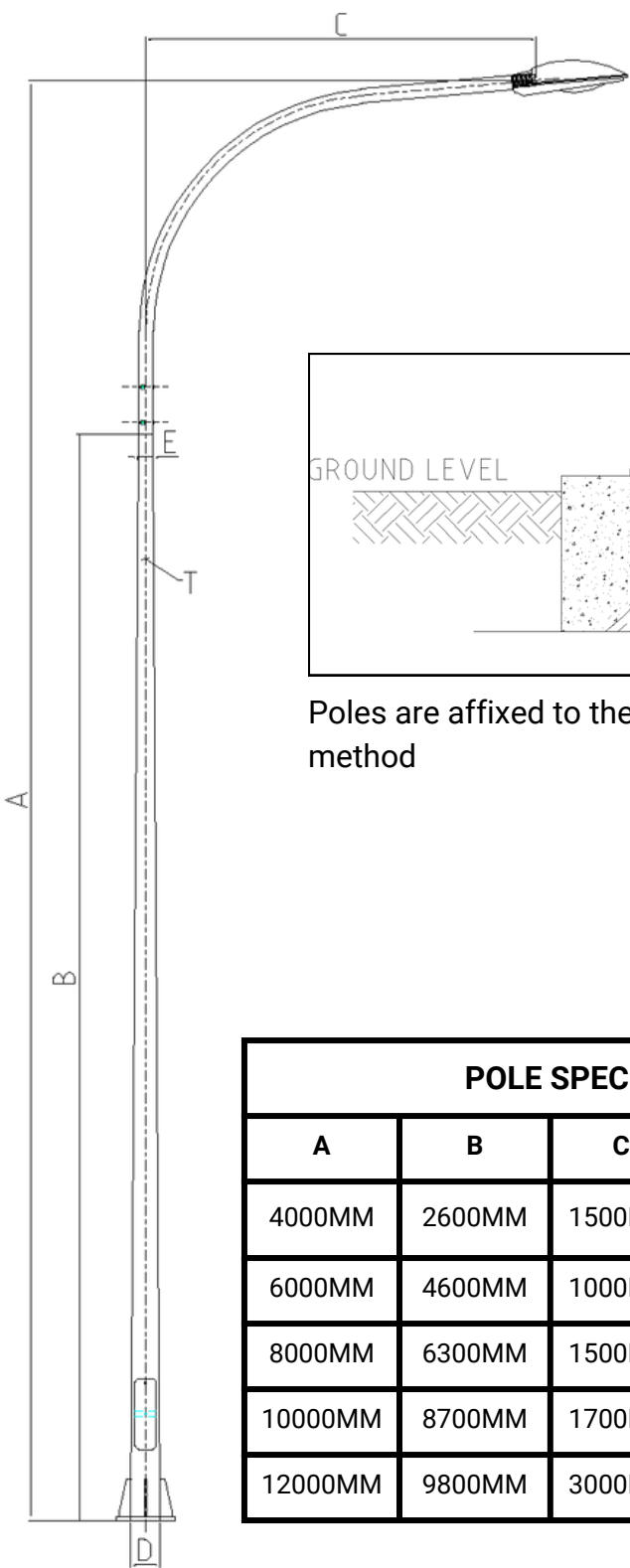
- Height - 4 - 12M
- Pole Sections - 1 - 2
- Surface Material - ASTM Standard Steel Grade (Q235B, Q345B, GR65)
- Pole Thickness - 3.5 - 6MM
- Number of Lighting Luminaires - Up to 4
- Lighting Arm Length : Up to 6M
- Max Wind Resistance - up to 40M/s
- Connection Method - Flange Connection/Direct Embedment

CUSTOM DESIGNS

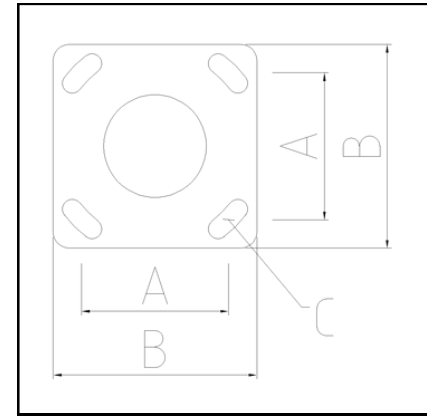
Our qualified engineers at Futao Metal can provide custom design options for high mast lighting poles that are tailored to the specific needs and requirements of your project. Reach out to us now at futaometal@gmail.com for more information.



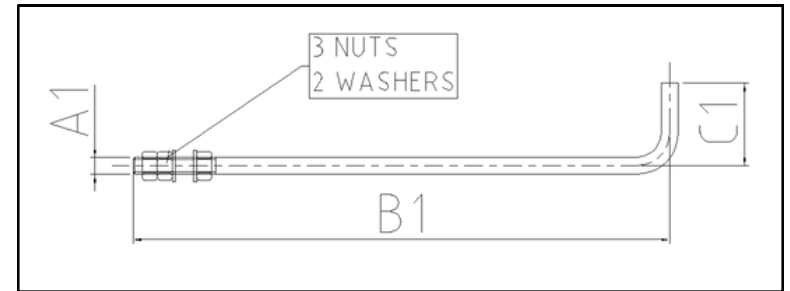
SINGLE ARM CONICAL STREET LIGHTING POLE



Poles are affixed to the ground via flange connection method



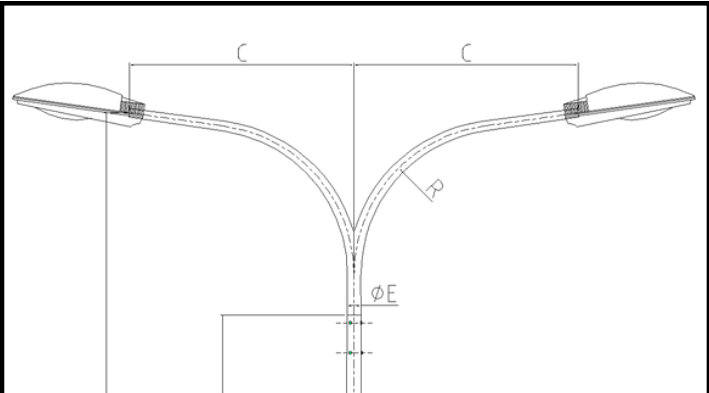
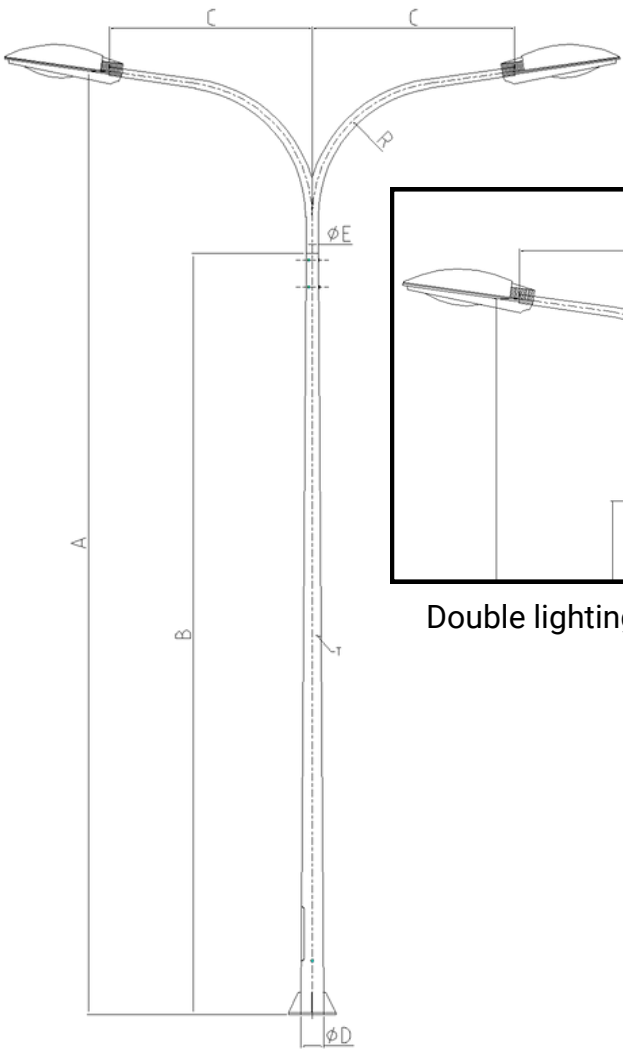
BASEPLATE



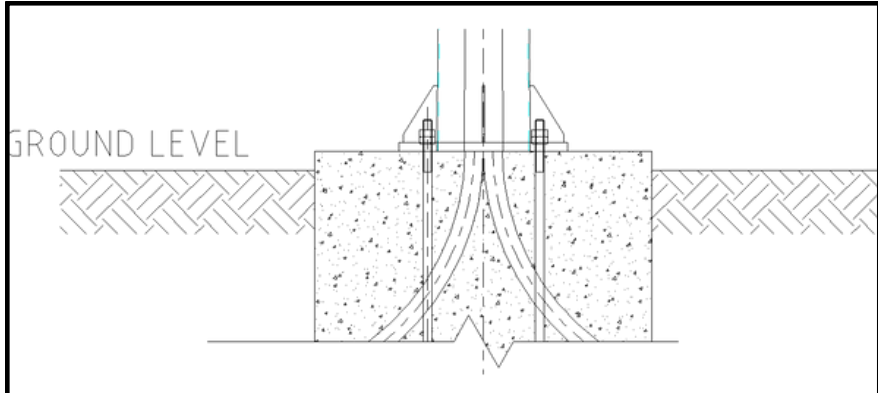
J-BOLTS

POLE SPECIFICATIONS						BASEPLATE			J - BOLTS		
A	B	C	D	E	T	A - A	B - B	C - C	A1	B1	C1
4000MM	2600MM	1500MM	Ø100	Ø60	3MM	250MM	179MM	16MM	M18	600MM	100MM
6000MM	4600MM	1000MM	Ø125	Ø60	3MM	250MM	179MM	16MM	M18	600MM	100MM
8000MM	6300MM	1500MM	Ø180	Ø75	6MM	400MM	300MM	20MM	M24	900MM	100MM
10000MM	8700MM	1700MM	Ø193	Ø75	6MM	400MM	300MM	25MM	M24	1000MM	100MM
12000MM	9800MM	3000MM	Ø245	Ø75	6MM	450MM	300MM	25MM	M24	1000MM	100MM

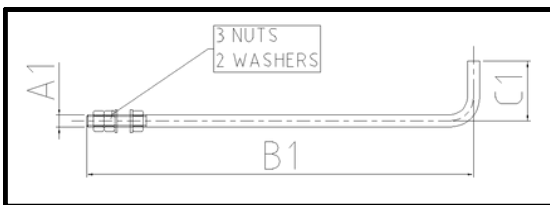
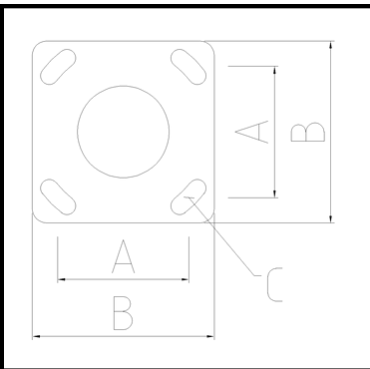
DOUBLE ARM CONICAL STREET LIGHTING POLE



Double lighting arms with adjustable bending angle (R)



Poles are affixed to the ground via flange connection method



POLE SPECIFICATIONS						BASEPLATE		
A	B	C	D	E	T	A - A	B - B	C - C
4000MM	2600MM	1500MM	Ø100	Ø60	3MM	250MM	179MM	16MM
6000MM	4618MM	1500MM	Ø180	Ø60	3MM	250MM	179MM	16MM
9000MM	6300MM	1500MM	Ø180	Ø75	3.5MM	350MM	260MM	20MM
10000MM	8700MM	1700MM	Ø193	Ø75	6MM	400MM	300MM	25MM
12000MM	9800MM	3000MM	Ø245	Ø75	6MM	450MM	300MM	25MM

J - BOLTS		
A1	B1	C1
M18	600MM	100MM
M18	600MM	100MM
M24	900MM	100MM
M24	1000MM	100MM
M24	1000MM	100MM