



FIXED TYPE

High mast lighting is a type of lighting system commonly used to illuminate large outdoor areas such as sports fields, highways, airports, and parking lots. High mast lighting fixtures are mounted on tall poles, typically ranging from 10 to 50 meters in height, in order to provide uniform and high-intensity lighting over a wide area.



FUTAO METAL



HIGH MAST LIGHTING PRODUCT CATALOGUE



HIGH MAST WITH RAISING + LOWERING DEVICE

These high mast lighting poles are equipped with a raising and lowering device that allows for easier installation and maintenance.

GENERAL SPECIFICATIONS

- Height - 10 - 50M
- Pole Sections - 1 - 5
- Surface Material - ASTM Standard Steel Grade (Q235B, Q345B, GR65)
- Pole Thickness - 4 - 16MM
- Number of Lighting Luminaires - 1 - 24
- Lighting Bracket Configuration - 1x6, 3x3, 4x6
- Max Wind Resistance - up to 40M/s
- Connection Method - Flange Connection/Direct Embedment



- Circular Lighting Fixture
- Can accommodate up to 24 lighting luminaires



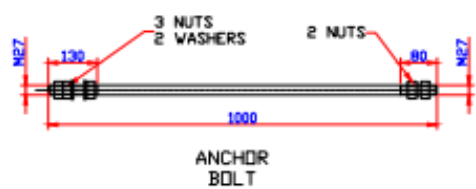
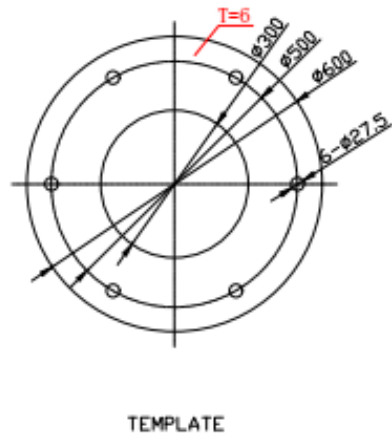
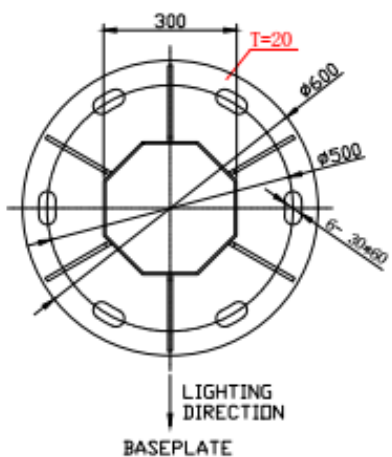
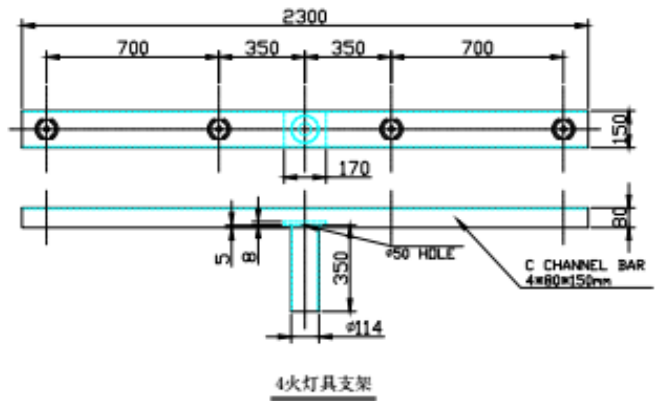
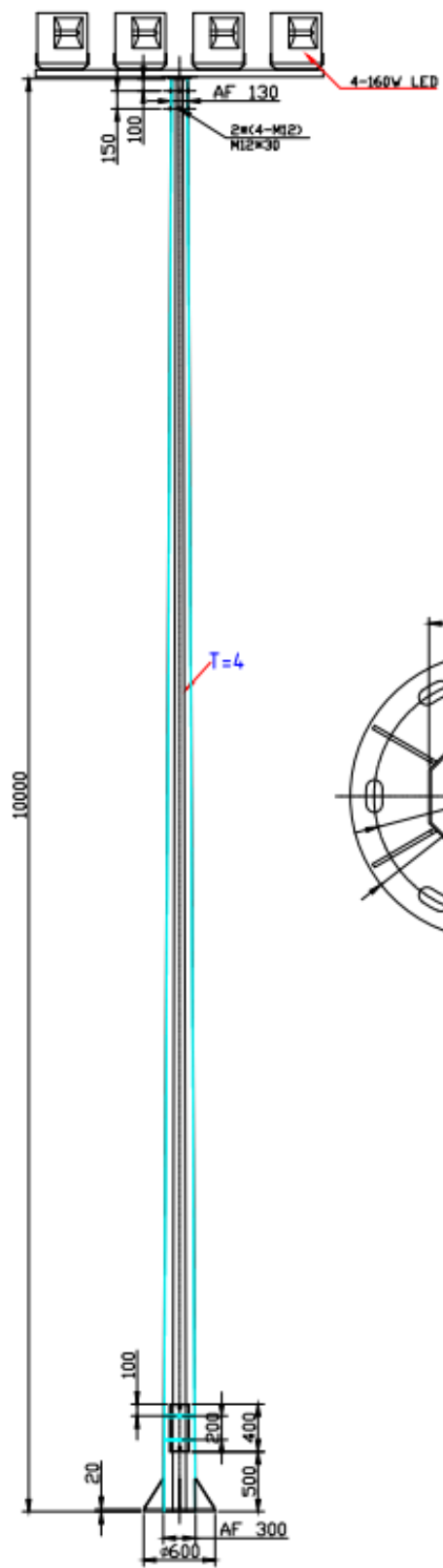
- Forward facing lighting fixture
- Can accommodate up to 6 lighting luminaires

CUSTOM DESIGNS

Our qualified engineers at Futao Metal can provide custom design options for high mast lighting poles that are tailored to the specific needs and requirements of your project. Reach out to us now at futaometal@gmail.com for more information.



Steel Grade	Q235B/A36, Q345B/A572, Q460/ASTM573 GR65, GR50				
Height	10M	15M	20M	25M	30M
Product Code	FT 01	FT 02	FT 03	FT 04	FT 05
Pole Shape	Octagonal	Octagonal	Octagonal/Dodeca gonal	Octagonal	Octagonal
Sections	1	2	2	3	3
Pole Thickness	4MM	4.75MM	8,6MM	10,8,6MM	9,8,6MM
Anchor Bolts	M27 x 1000	M27 x 1000	M27 x 1000	M30 x 1500	M48 x 1500
Baseplate	Ø600x20MM	Ø600x20MM	Ø800x20MM	Ø1100x20MM	1800x1800x20
Hot Dip Galvanization	All poles shall be hot dip galvanized in accordance with ASTM A123/M standards				
Welding	Welding procedures shall be according to AWS D1.1 standards				
Powder Coating	Epoxy coating available upon request				



- General Notes:
- 1.All dimensions are in mm unless specified
 - 2.Pole shaft steel material Q235B
 - 3.Welding shall be according to AWS D1.1
 - 4.All steel are hot dip galvanized in accordance with ASTM A123
 - 5.Burrs or sharp edges shall be removed
 - 6.All welds shall be cleaned mechanically against slag and spatters.
 - 7.All parts shall be hot dip galvanized



FT 01 - 10M HIGH MAST LIGHTING POLE

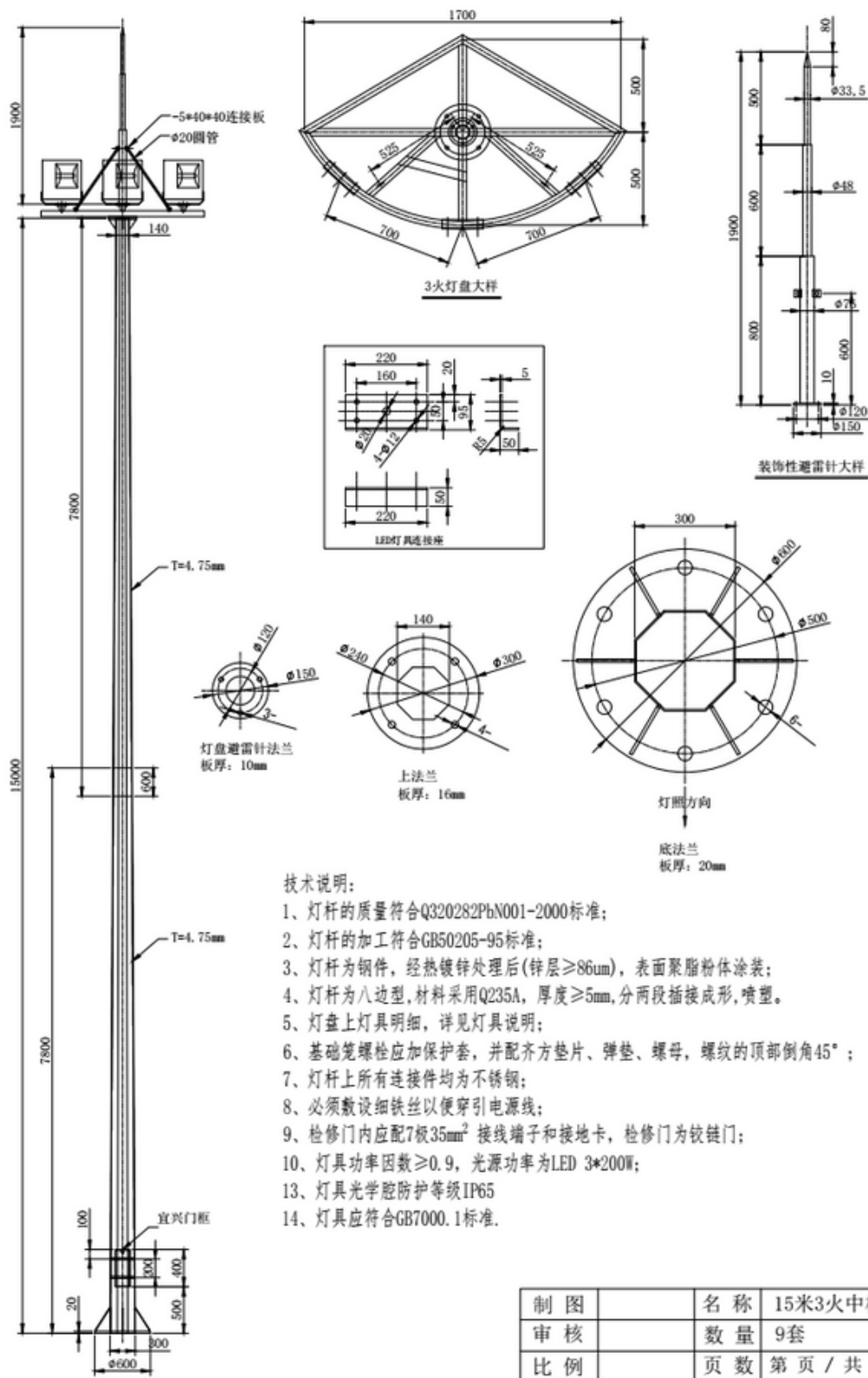


www.metalpole.org

CONTACT US

(86) 188 5249 3688

futaometal@gmail.com



技术说明:

- 1、灯杆的质量符合Q320282PbN001-2000标准;
- 2、灯杆的加工符合GB50205-95标准;
- 3、灯杆为钢件,经热镀锌处理后(锌层 $\geq 86\mu\text{m}$),表面聚脂粉体涂装;
- 4、灯杆为八边型,材料采用Q235A,厚度 $\geq 5\text{mm}$,分两段插接成形,喷漆。
- 5、灯盘上灯具明细,详见灯具说明;
- 6、基础笼螺栓应加保护套,并配齐方垫片、弹垫、螺母,螺纹的顶部倒角 45° ;
- 7、灯杆上所有连接件均为不锈钢;
- 8、必须敷设细铁丝以便穿引电源线;
- 9、检修门内应配7板 35mm^2 接线端子和接地卡,检修门为铰链门;
- 10、灯具功率因数 ≥ 0.9 ,光源功率为LED 3*200W;
- 13、灯具光学腔防护等级IP65
- 14、灯具应符合GB7000.1标准。

制图		名称	15米3火中杆
审核		数量	9套
比例		页数	第页 / 共页

 **FUTAO METAL**

FT 02 - 15M HIGH MAST LIGHTING POLE



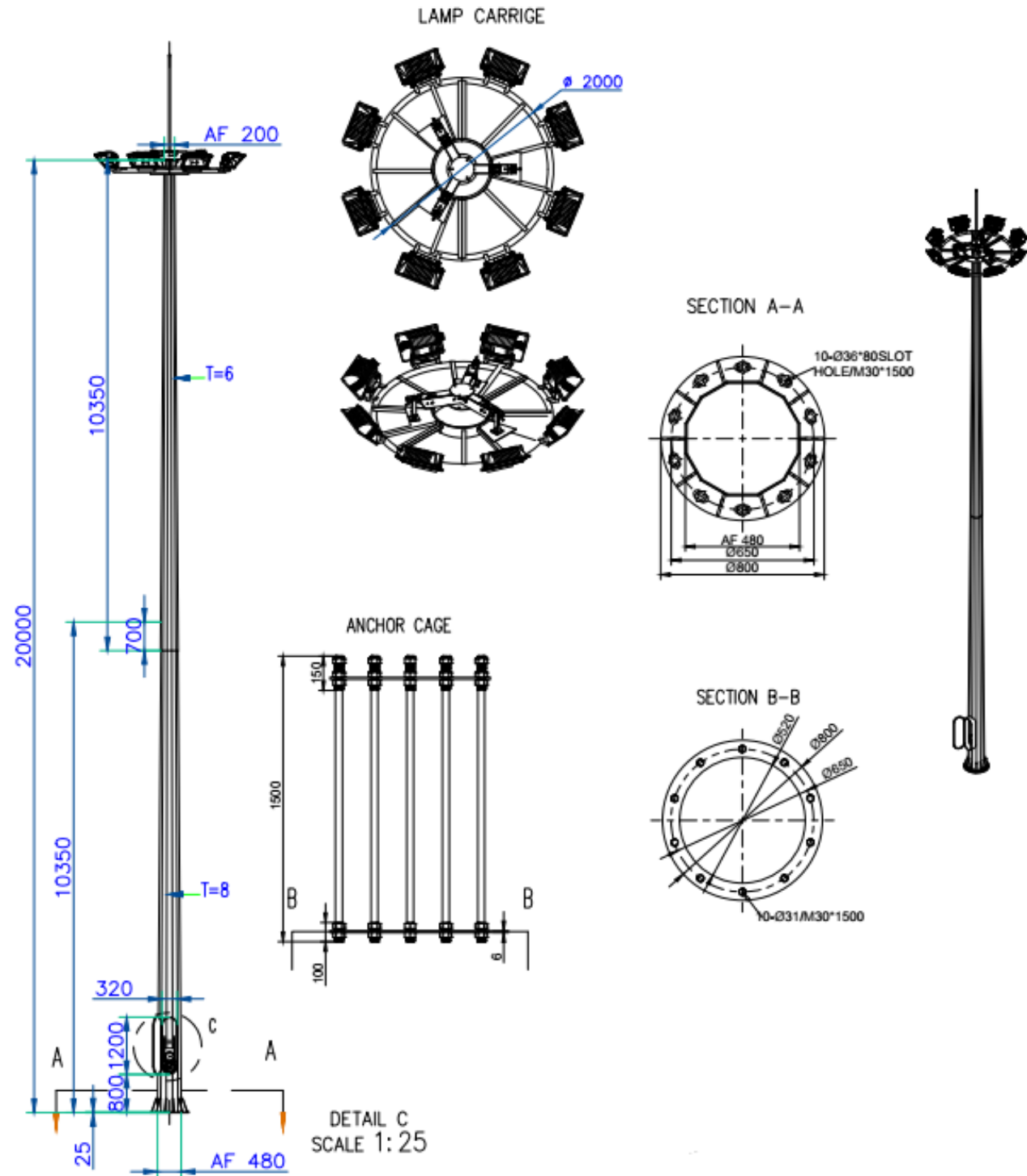
www.metalpole.org

CONTACT US

(86) 188 5249 3688

futaometal@gmail.com

**FT 03 - 20M HIGH
MAST LIGHTING
POLE**

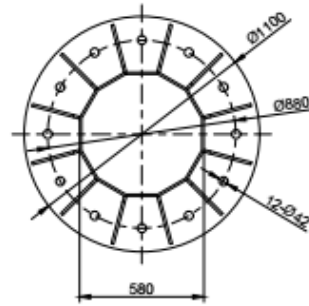
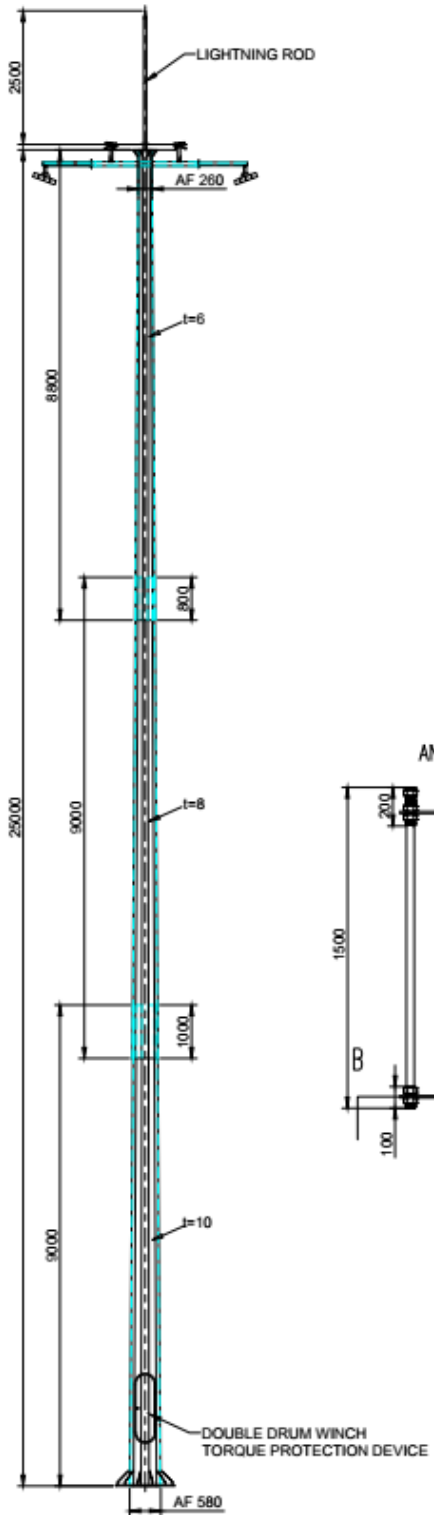


www.metalpole.org

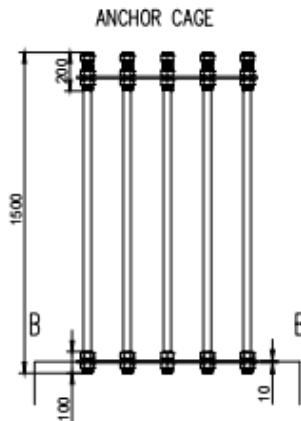
CONTACT US

(86) 188 5249 3688

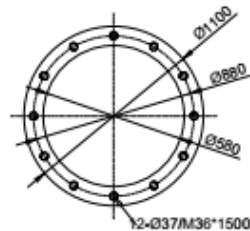
futaometal@gmail.com



BASEPLATE



SECTION B-B



General Notes:

- 1) All dimensions are in mm unless specified.
- 2) All diameters are measured on outside of across flats.
- 3) Pole shaft steel material shall be GB/T912 Q345B
- 4) All welding process shall be done in accordance with AWS D1.1:M2002
- 5) All steel shall be hot dip galvanized in accordance with ASTM A123/M with minimum coating thickness of 100 microns.
- 6) All fasteners (bolts, nuts, and washers) shall be hot dip galvanized as per ASTM A153.
- 7) Anchor cage shall be provided.

DESIGNED BY:	CHECKED BY:	CLIENT:
DRAWN BY:	CHECKED BY:	PROJECT:
SCALE: 1:1	REV: 20190614	25M HIGH MAST POLE Assembly Drawing
TENDER NO:	DRAWING NO: DRW-190046-1	DRAWING TITLE: General Arrangement



FT 04 - 25M HIGH MAST LIGHTING POLE

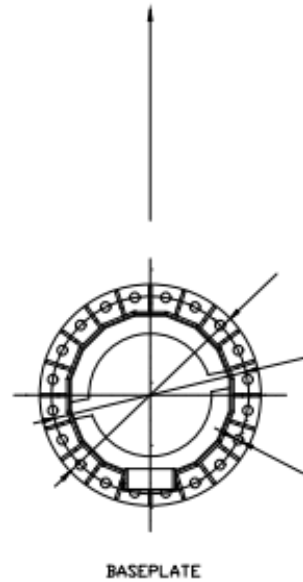
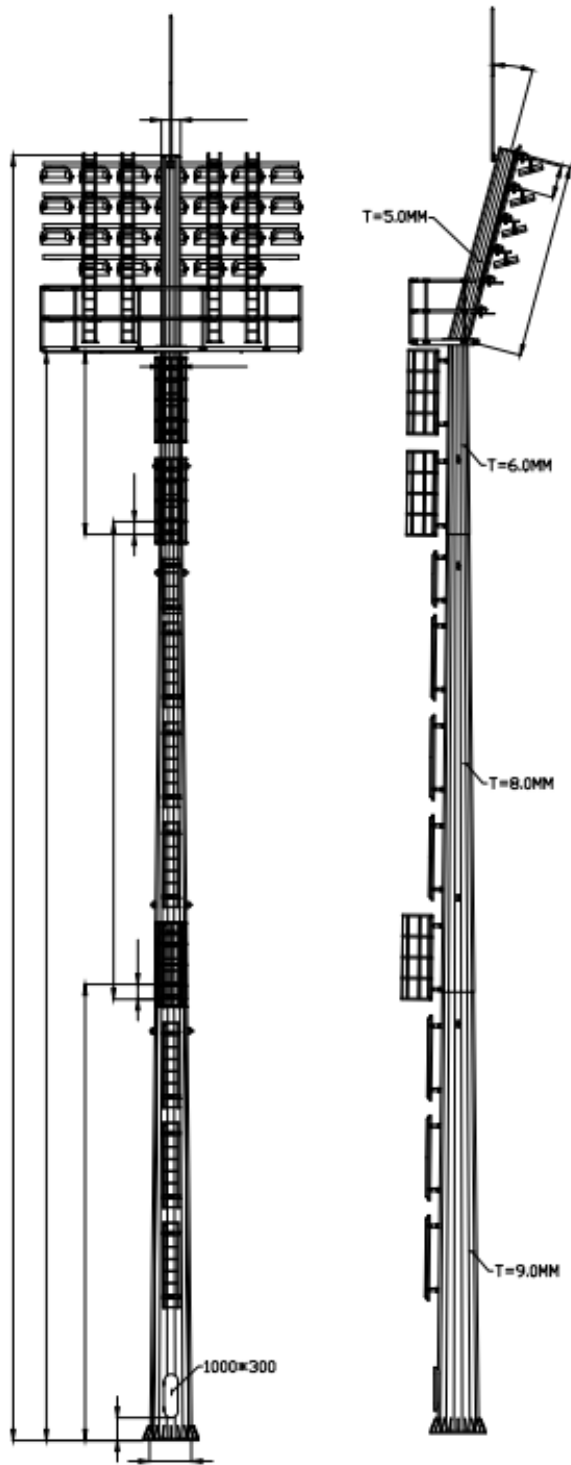


www.metalpole.org

CONTACT US

(86) 188 5249 3688

futaometal@gmail.com



 **FUTAO METAL**

FT 05 - 30M HIGH MAST LIGHTING POLE



www.metalpole.org

CONTACT US

(86) 188 5249 3688

futaometal@gmail.com